



Commercial Property Agency • Property Investment Consultants • Surveyors

### “Let” or “Sold” or “Acquired” by Goodsir Graham in 2008



**Land at Rear of 64 Colvestone Crescent, London E8**  
Development Opportunity **“Sold”**  
On Behalf of Private Clients



**24 Kingsland Road, London E2**  
Ground & Basement Retail  
**“Let”** to Off Licence



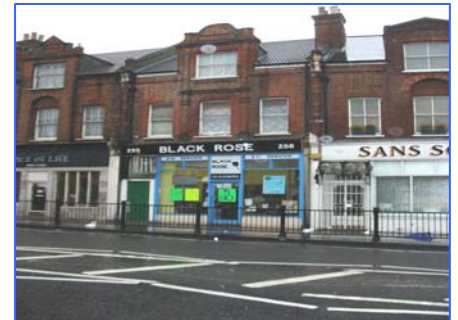
**10 Lambs Conduit Passage, London WC1**  
Ground & Basement Retail Unit  
**“Let”** to Art Gallery



**4 Underwood Row, London N1**  
Loft Style **Offices “Let By”**



**12 Waterson Street, London E2**  
Loft Offices **“Sold By”**



**258 Lee High Road, London SE13**  
Freehold Investment **“Acquired By”**



**34-41 Whitelion Street, London N1**  
Service Apartment Development Site  
**“Sold By”**



**Archway Roundabout, Archway, London N19**  
Development Site  
**“Sold By”**



**255-257 Liverpool Road, London N1**  
**“Rent Review”** Completed for Private Client

**“MORE SHOPS AND OFFICES REQUIRED!”**

T: 020 7796 3796 F: 020 7796 2796 W: [www.goodsirgraham.co.uk](http://www.goodsirgraham.co.uk)  
69-70 Long Lane, London EC1A 9EJ

Goodsir Graham Commercial Ltd. Registered in England: 4845267  
Directors: Paul C. Goodsir BSc MRICS Robert M. Graham MNAEA  
Rent Review Surveyor: Michael S. Perlin FRICS IRRV MCI Arb



**163 Kings Cross Road,  
London WC1**  
Freehold Retail & Flat Investment  
**"Sold By"**



**8 Great Western Road  
London W9**  
**"Acquired"** Freehold Investment  
With Development Potential



**160 Goswell Road, London EC1**  
Retail Investment  
**"Acquired and Now Managed"**  
On Behalf of Investor Client



**New Park Road,  
London SW9**  
**"Rent Review"** Completed for  
Private Client



**New Loom House, 101 Back  
Church Lane, London E1**  
Office Suite **"Let"** To Money  
Transfer Company



**Unit F2, 82-90 Mile End Road,  
London E1**  
**"Let"**  
To Light Industrial Catering



**1 Roscoe Street,  
London EC1**  
**"Let"**  
To Sushi Takeaway



**Charterhouse Square,  
London EC1**  
**"Acquired By"**  
On Behalf of Private Clients



**24-32 Kilburn High Road,  
London NW6**  
Retail (A1) Unit **"Let"** To  
Starbucks Coffee Chain

**"MORE SHOPS AND OFFICES REQUIRED!"**



**83 Crampton Street,  
London SE17**  
Office Unit **"Sold By"**



**127 Newington Green Road,  
London N16**  
Refurbished Shop Unit **"Let"** &  
Investment **"Sold"**



**67 Crawford Street,  
London SE5**  
Development Site **"Sold"** To A  
Social Housing Provider On An  
Unconditional Basis.



**112 Tabernacle Street,  
London EC2**  
Office Unit **"Sold By"**



**67 Camden High Street,  
London NW1**  
Rent Review **"Agreed By"**



**376 City Road,  
London EC1**  
Office Floor **"Let By"**



**Dalby House, 396 City Road,  
London EC1**  
2 X Office Floors  
**"Let By"**



**Units 3 & 4, 9 Mallow Street,  
London EC1**  
2 X Office Suites  
**"Sold & Managed By"**  
06/08



**170 Camberwell Road,  
London SE5**  
Retail Unit **"Let"** On Behalf of  
Private Clients.

**"MORE SHOPS AND OFFICES REQUIRED!"**



**227 Walworth Road,  
London SE17**  
Ground, Lower Ground &  
Mezzanine Retail Premises  
**"Let By"**



**135-137 City Road,  
London EC1**  
Ground & Basement Retail  
Premises  
**"Let By"**



**Unit 1, 20 Newington green,  
London, N16**  
Ground Floor  
Restaurant  
**"Sold By"**



**49-51 Farringdon Road,  
London, EC1**  
First Floor Office Premises  
**"Let By"**



**Unit A, 4-6 Brownlow Mews,  
London EC1**  
Ground Floor Office  
**"Let By"**



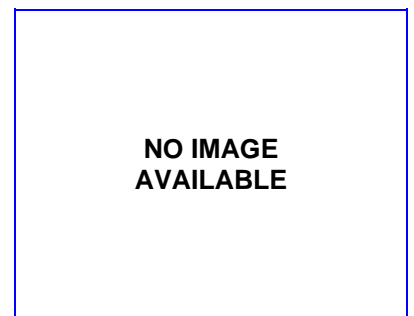
**Unit 19, Celia Fiennes House,  
Well Street, London, E9**  
Second Floor Office  
**"Let By"**



**21 Great Sutton Street,  
London, EC1**  
Office Floor  
**"Let By"**



**Unit 1, 9 Mallow Street,  
London, EC1**  
1 Office Suite  
**"Sold & Managed By"**



**16 Fitzjohns Mansions,  
London, NW3**  
Third Floor  
**"Let By"**

**"MORE SHOPS AND OFFICES REQUIRED!"**



**100-101 Turnmill Street,  
London, EC1  
Office Floor  
"Let By"**



**337 Walworth Road,  
London, SE17  
Ground Floor Retail Premises  
"Let By"**



**185a-185b High Street, East Ham,  
London, E6  
80% Uplift Achieved  
"Rent Review"**



**Unit 4-6 Brownlow Mews,  
London, WC1  
1<sup>st</sup> Floor Office  
"Sold By"**



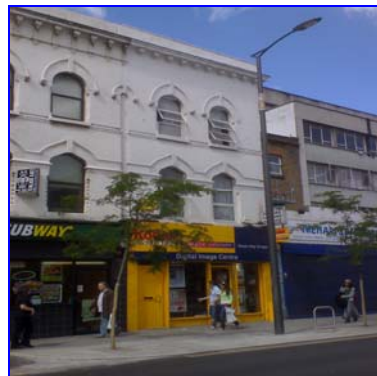
**Unit 2, 20 Newington Green,  
London, N16  
Ground Floor Hairdresser  
"Sold By"**



**99 Essex Road,  
London, N1  
Freehold Shop  
"Sold By"**



**161 Whitecross Street, London EC1  
Retail (A1) Unit  
"Let By"**



**240 Walworth Road,  
London SE17  
Ground Floor & Basement Retail  
Premises  
"Let By"**



**205 Blackstock Road,  
London N5  
Retail Unit  
"Let By"**

**"MORE SHOPS AND OFFICES REQUIRED!"**



**8 Creed Lane  
London EC4  
Retail (A1)  
"Let By"  
To Café Organic.**



**13-19 Vine Hill  
London EC1  
Office (B1) in Clerkenwell  
"Let By" To T.V. Co.**



**64-65 Cowcross Street  
London EC1  
Office (B1) in Farringdon  
"Let By" To Law Firm.**



**Unit 1, 9 Mallow Street,  
London EC1  
Office (B1) Unit  
"Sold By"**



**Unit 1, 22-25 Bartholomew Square  
London EC1  
Office (B1) Unit  
"Sold By"**



**134 Old Street,  
London EC1  
Office (B1) Building  
"Let By" To DSP Architects.**



**2-5 Benjamin Street,  
London EC1  
"Rent Review" Agreed  
For Taxbriefs**



**62 Britton Street,  
London EC1  
Office (B1) Floor  
"Let By" To Design Culture**



**Units 7, 8 & 9, Victoria House,  
Southampton Row,  
London WC1  
9,040 Sq Ft Retail Premises  
"Acquired By"**

**"MORE SHOPS AND OFFICES REQUIRED!"**



**145 Stroud Green Road,  
London N4**  
Restaurant (A3) Unit  
**"Let By"**



**304 Walworth Road,  
London SE17**  
Retail (A1) – Discount Shop  
**"Let By"**



**159 High Street Southgate,  
London N14**  
Retail (A2)  
**"Sold By"**



**Unit 18, Butterfly Walk,  
London SE5**  
Retail (A1) Unit  
**"Acquired By"**  
For Bargain Express.



**87 Kingsland Road,  
London E2**  
Retail (A1) / Office (B1) Building  
**"Let By"**



**Unit 2, 9-10 Mallow Street,  
London EC1**  
Office Unit  
**"Sold By"**

**"MORE SHOPS AND OFFICES REQUIRED!"**

